

# Mine site Imaging

## Near mine exploration

### Overview

Quantec provides expertise in near mine and at mine exploration imaging. Improve drill planning and efficiencies through effective deep earth imaging.

We have over 30 years of brownfield exploration experience providing 1D, 2D and 3D imaging solutions of multi-parameter geophysical data.

We have carried out over 80 **Mine site** surveys and helped companies make new discoveries adding to life of mine.

Some clients: Veladero, Vicuna, KIDD Creek, Yauricocha, Red Lake, Copper Mtn, Kemess

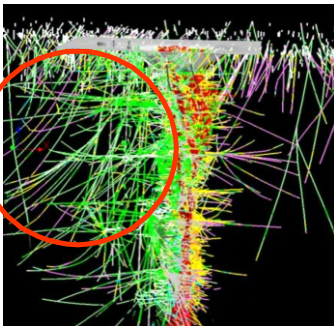
### Experience working at mine sites:

- Flexible survey designs
- Big picture imaging
- Near mine evaluation
- Safe Operations
- Active Mine deployment
- Below pit imaging
- Natural source fields
- Over 80 projects at brownfield locations

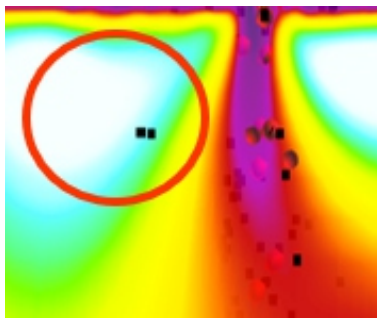


(data receivers in active pit)

### Drill more strategically and save money!

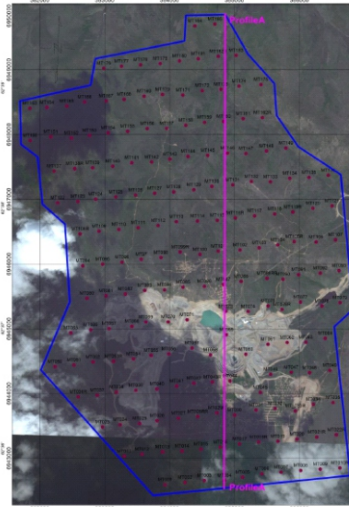


(over 15M in drilling over 15 years in circle)

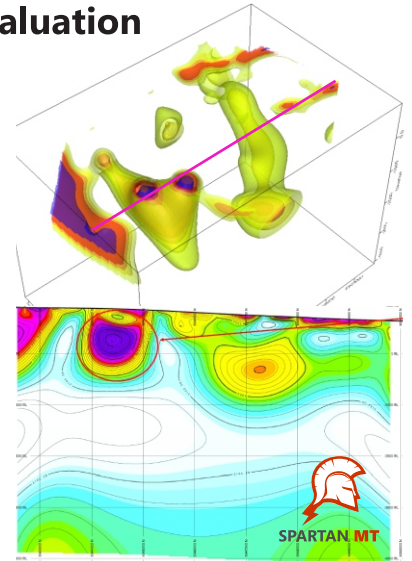


(survey says - "don't drill here!")  
(data from KIDD Creek TITAN survey shown to 700 meters)

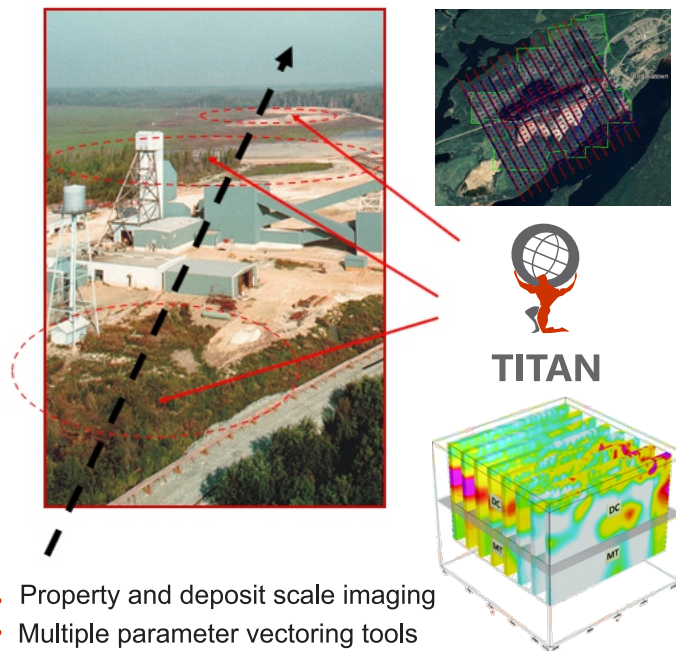
### Effective property evaluation



(3D SPARTAN MT resistivity survey layout and model of Minto mine site and surrounding area)



### Near mine exploration



- Property and deposit scale imaging
- Multiple parameter vectoring tools
- Drill targeting from surface to 1500+ meters

**SAFE RELIABLE ACCURATE**



# Mine Planning

**Innovative Geophysical Technology  
for Planning & Risk Mitigation**

## Reduce Risk

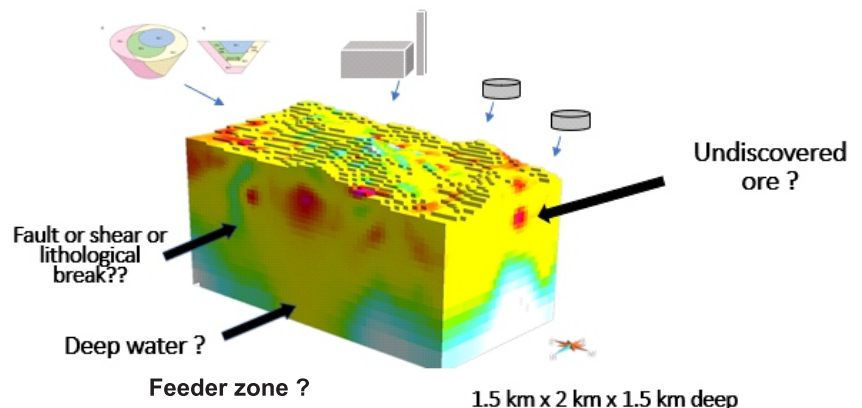
- Design and Planning are the key first steps recognized as a primary line of defense for risk mitigation at mine sites
- By obtaining information early in the process and knowing about the 3D volume of space that will support your mine infrastructure for 10, 20 or 50 years ..you help to set the foundation for best practice mine planning

## Mitigate risk at the planning stage

**TRUE WISDOM IS  
KNOWING WHAT YOU  
DON'T KNOW**

CONFUCIUS  
PICTUREQUOTES.COM

*Let's know what you don't know!*



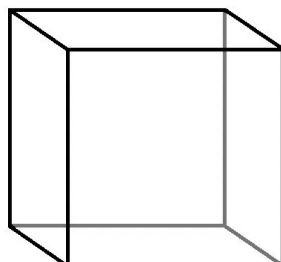
## Minesite Imaging

## Deep site Characterisation studies

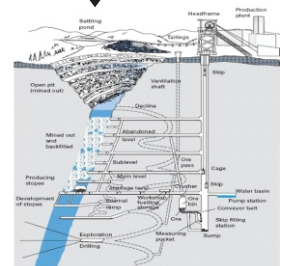
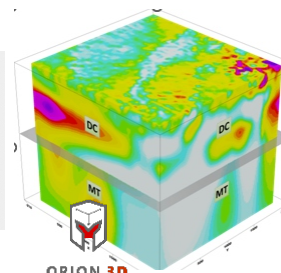
## Know more about the subsurface

**Obtain big picture image at feasibility stage to reveal potential deeper risk issues**

- ❑ Condemnation
- ❑ Structure (faults)
- ❑ Deep water
- ❑ Tailings planning
- ❑ Additional ore (delineation)
- ❑ Life of mine data asset
- ❑ Affordable
- ❑ Time ~ 4 weeks



Knowing is better than  
not knowing. Every  
time.  
Cassandra Clare



- deep 3D resistivity imaging to 1500M with MT and DCIP to 750 meters (ORION 3D)