

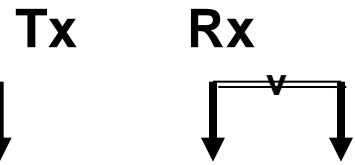
TITAN RESOLUTION AND DEPTH

This brief slide deck shows how the features of the TITAN system contributes to higher resolution and depth of penetration

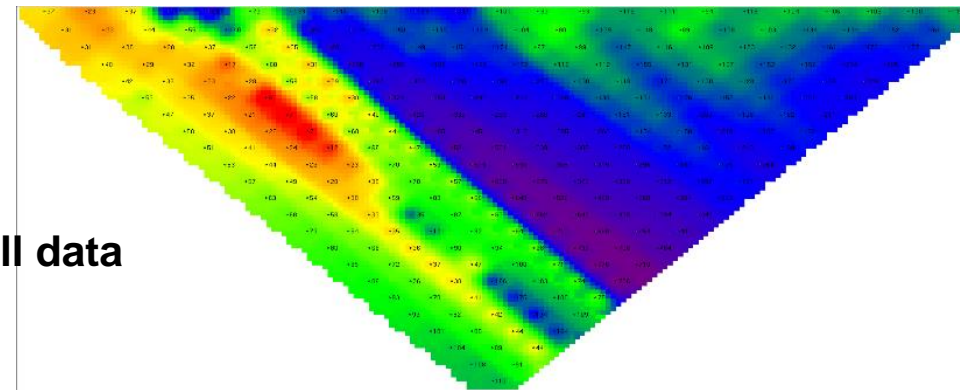
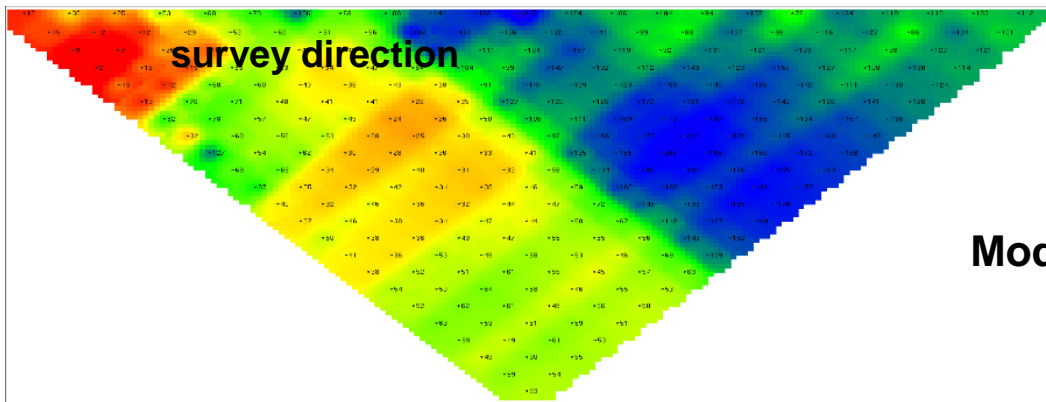
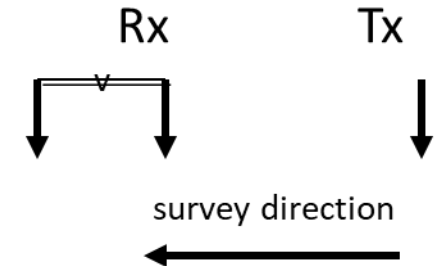


Every line collects multi direction data Providing more data and better resolution

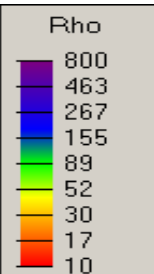
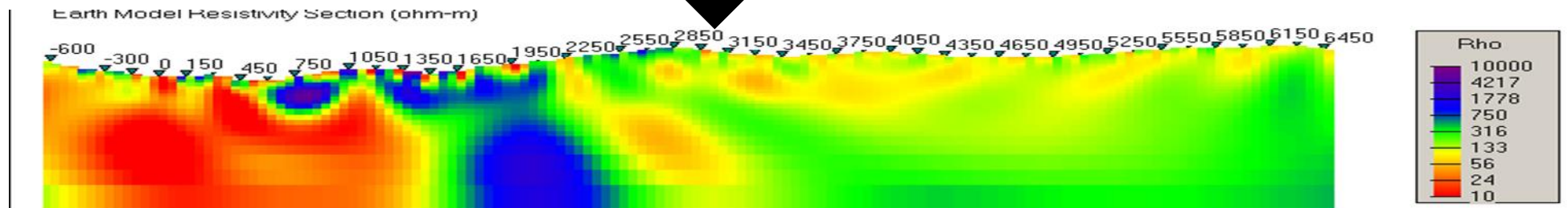
Rx dipoles to right of Tx



Rx dipoles to left of Tx



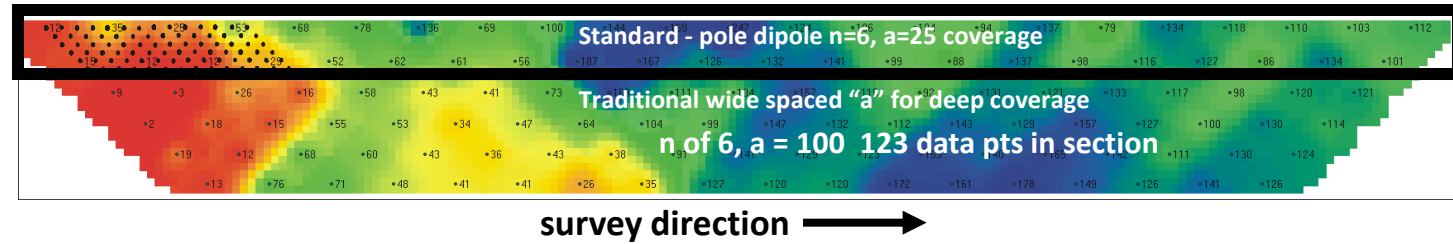
Model using all data



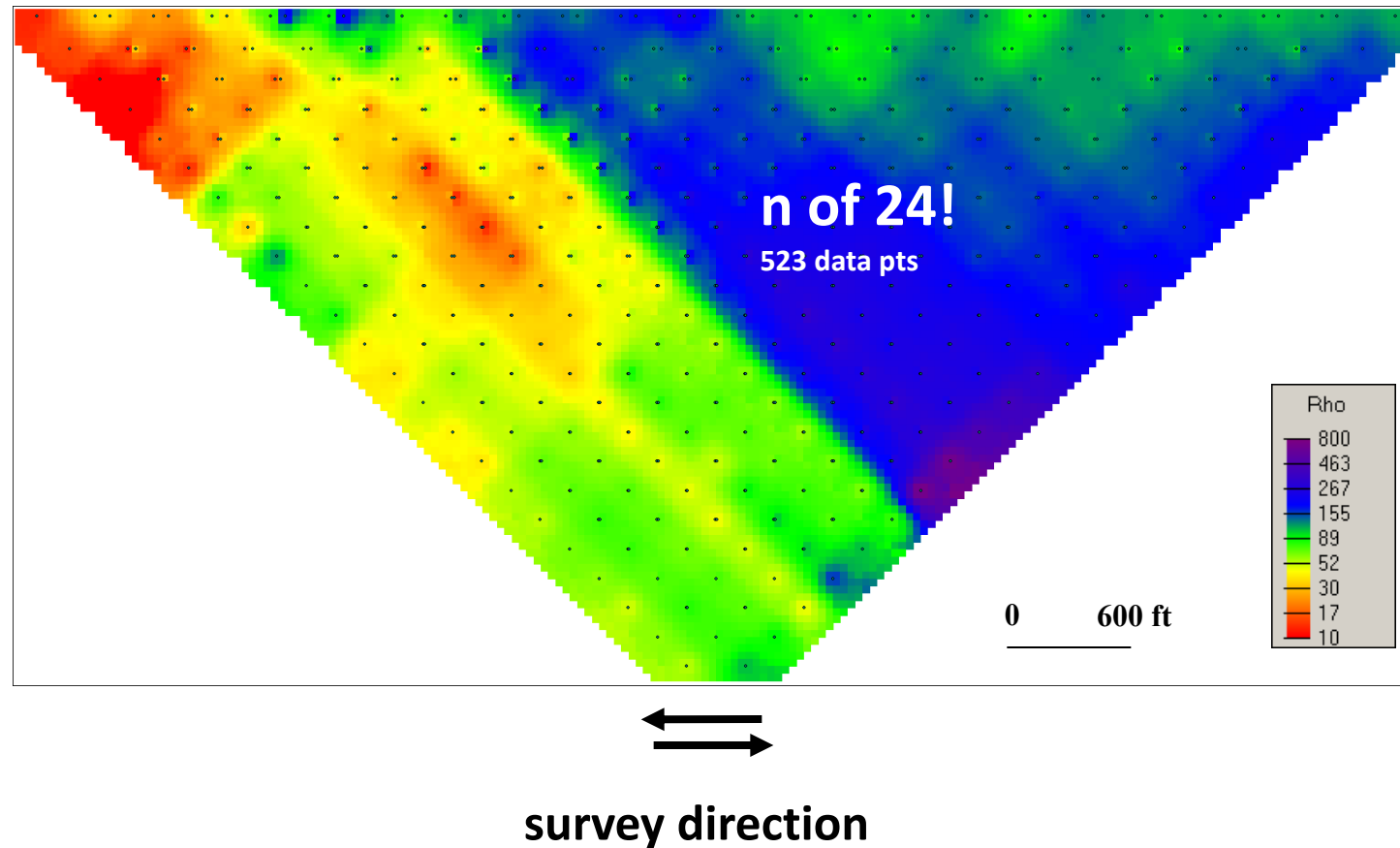
TITAN

TITAN is deeper than most other surveys

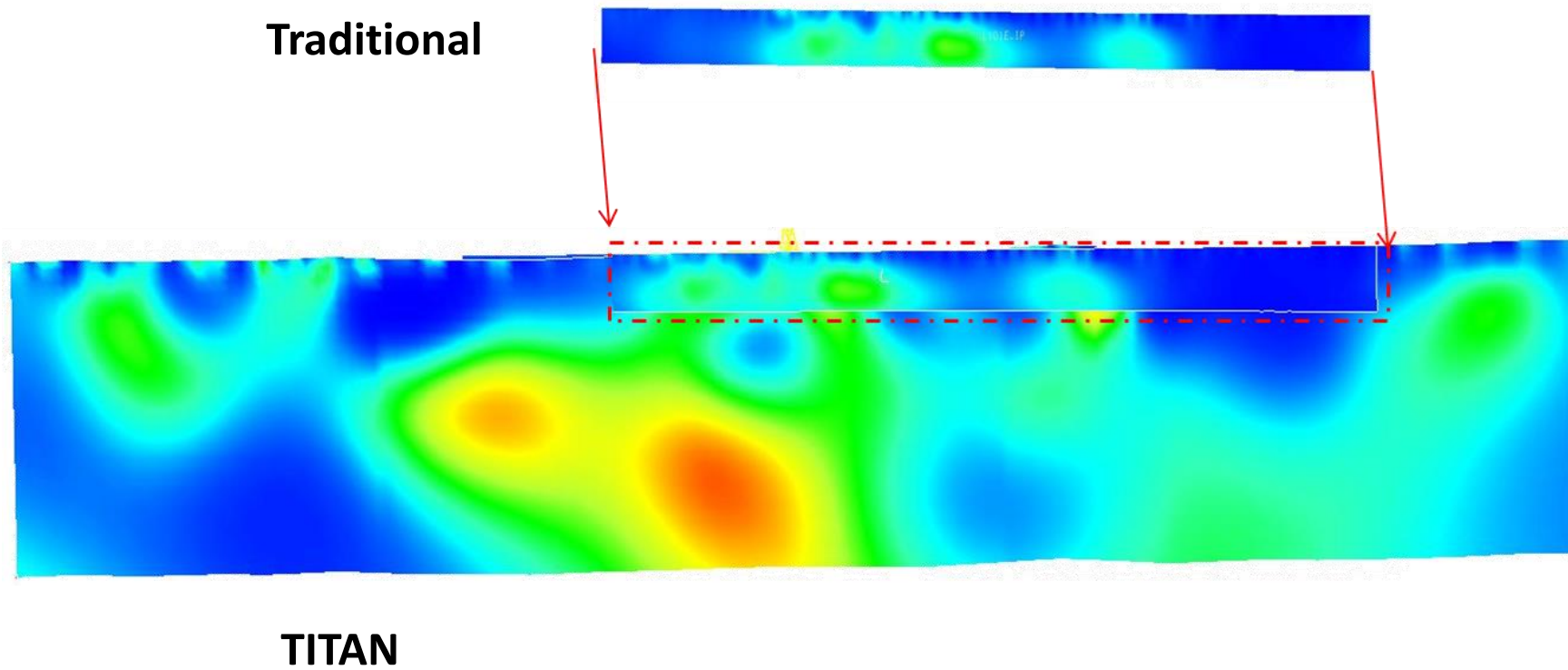
Traditional



TITAN



TITAN is deeper than most other surveys



TITAN is tailored for every project



Flexible dipole lengths and additional current contribute to best imaging practices



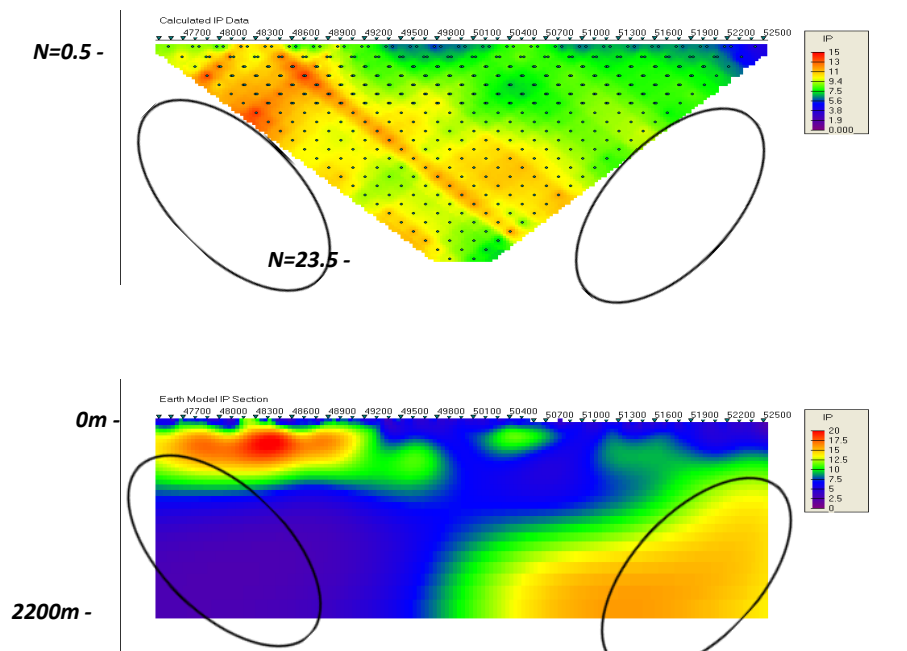
TITAN

TITAN deployed with large dipoles and additional current extensions

Standard Pole-Dpdp

($a=200m$ / $n=0.5-23.5$)

{25 Current Injections Inside 24ch Array = 600 pts}



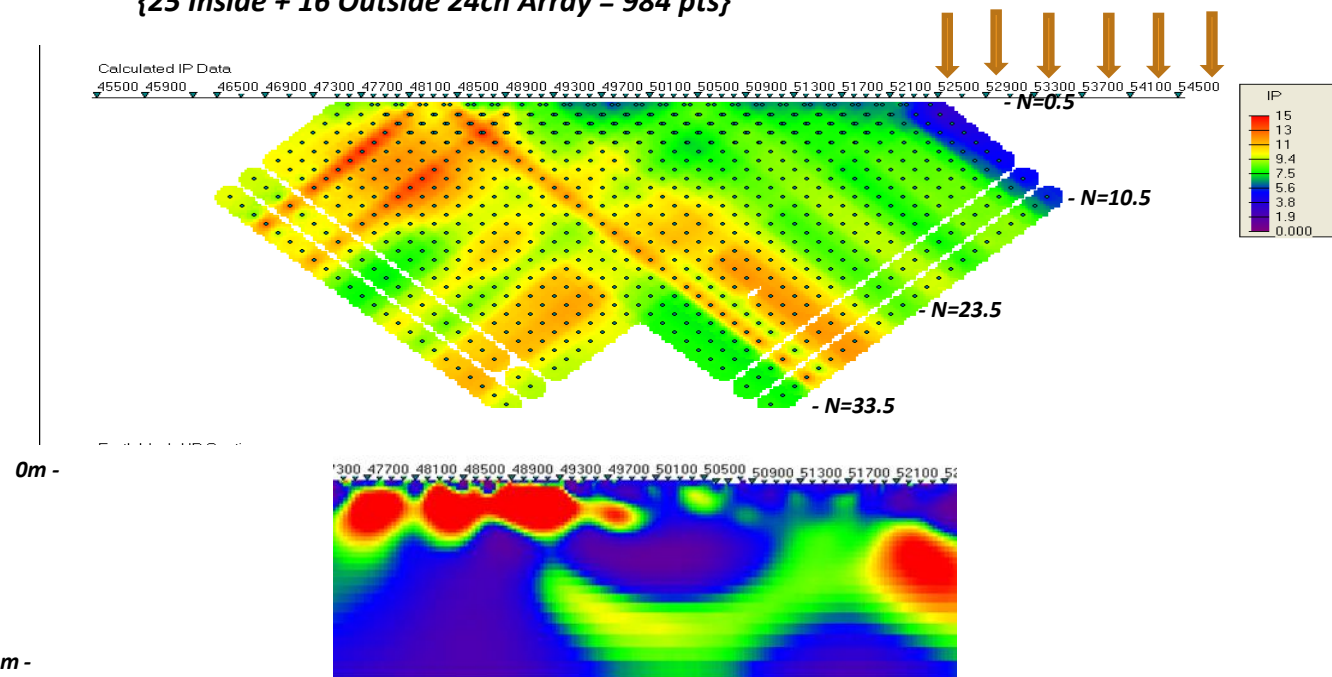
Smooth UBC 2D IP Model

(Converges in 20 iters @ 0.3 error floor)

Expanded Pole-Dpdp

($a=200m$ / $n=0.5-33.5$)

{25 Inside + 16 Outside 24ch Array = 984 pts}



Smooth UBC 2D IP Model

(Converges in 29 iters @ 0.3 error floor)

Notice Improved Lateral Resolution and Depth Penetration using same equipment and manpower. Required time increases.

Data courtesy Entre Gold



TITAN